

# Contents

## Review Article

### Charge Transport in Disordered Graphene-Based Low Dimensional Materials

Alessandro Cresti<sup>1,2</sup>, Norbert Nemeč<sup>3</sup>, Blanca Biel<sup>1,2</sup>, Gabriel Niebler<sup>4,5</sup>, François Triozon<sup>1</sup>, Gianaurelio Cuniberti<sup>4</sup>, and Stephan Roche<sup>2,\*</sup>

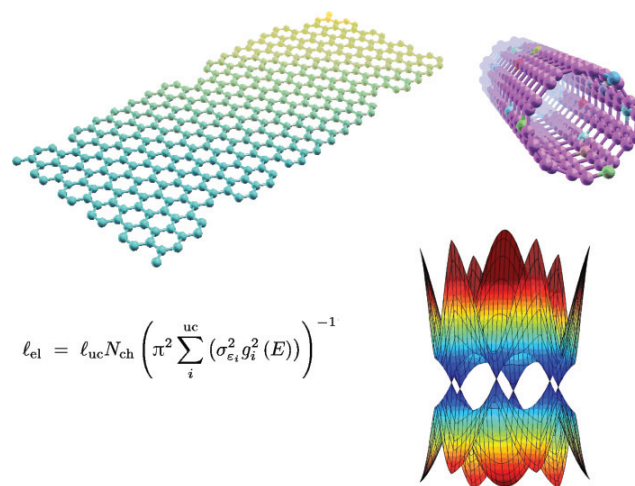
<sup>1</sup> CEA, LETI, MINATEC, France

<sup>2</sup> CEA, Institute for Nanoscience and Cryogenics, France

<sup>3</sup> University of Cambridge, UK

<sup>4</sup> TU Dresden, Germany

<sup>5</sup> Charles University, Czech Republic



361–394

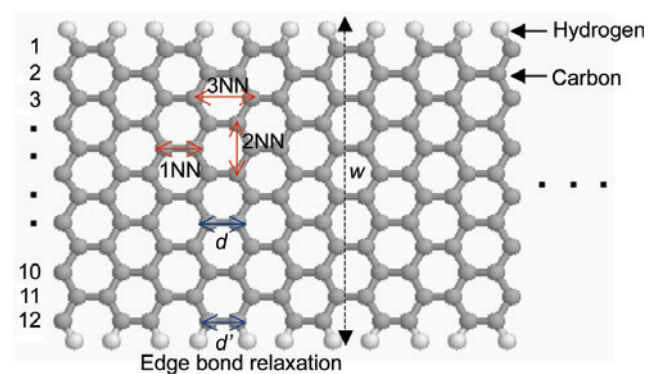
## Research Article

### Computational Model of Edge Effects in Graphene Nanoribbon Transistors

Pei Zhao<sup>1</sup>, Mihir Choudhury<sup>2</sup>, Kartik Mohanram<sup>2</sup>, and Jing Guo<sup>1,\*</sup>

<sup>1</sup> University of Florida, USA

<sup>2</sup> Rice University, USA



395–402

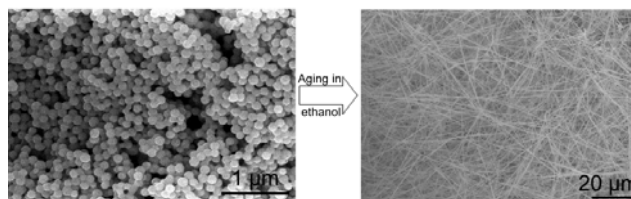
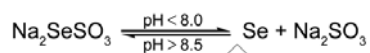


### Preparation of Monodisperse Se Colloid Spheres and Se Nanowires Using $\text{Na}_2\text{SeSO}_3$ as Precursor

Liping Liu, Qing Peng, and Yadong Li\*

Tsinghua University, China

403–411

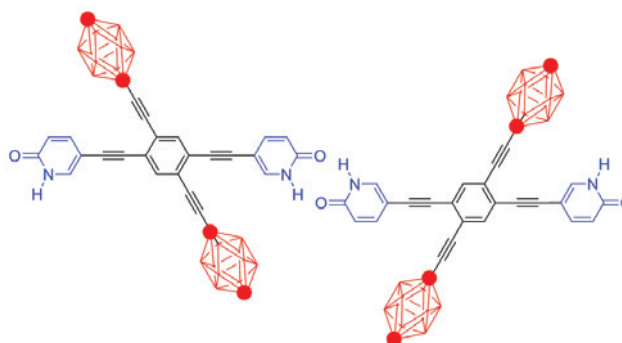


### Nanotrains and Self-Assembled Two-Dimensional Arrays Built from Carboranes Linked by Hydrogen Bonding of Dipyrindones

Takashi Sasaki, Jason M. Guerrero, Ashley D. Leonard, and James M. Tour\*

Rice University, USA

412–419

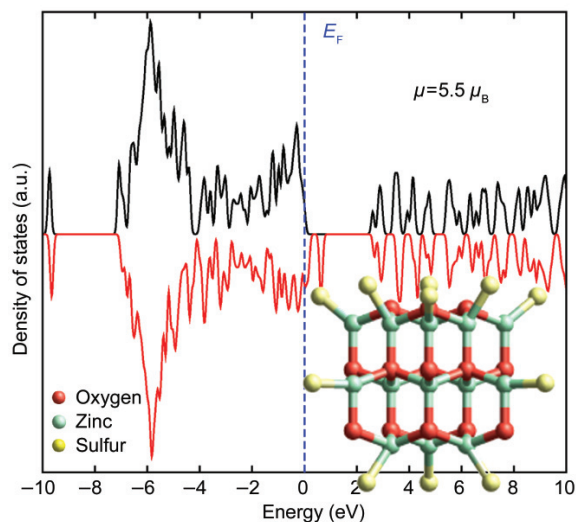


### Enhanced Ferromagnetism in ZnO Nanoribbons and Clusters Passivated with Sulfur

Andrés R. Botello-Méndez, Florentino López-Urías, Mauricio Terrones\*, and Humberto Terrones

IPICYT, México

420–426

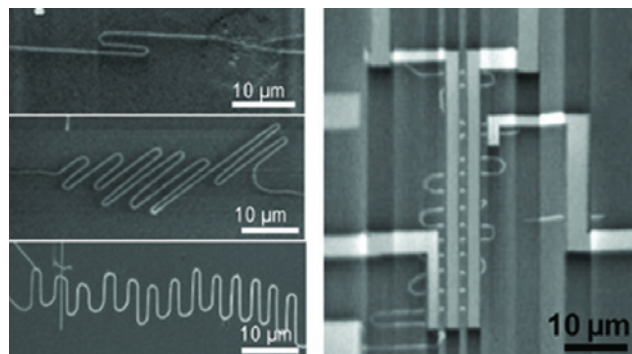


### Growth of Serpentine Carbon Nanotubes on Quartz Substrates and Their Electrical Properties

Seokwoo Jeon, Changgu Lee, Jinyao Tang, James Hone\*, and Colin Nuckolls\*

Columbia University, USA

427–433



### Direct Evidence for Lip–Lip Interactions in Multi-Walled Carbon Nanotubes

Chuanhong Jin\*, Kazu Suenaga\*, and Sumio Iijima

National Institute of Advanced Industrial Science and Technology (AIST), Japan

434–439

